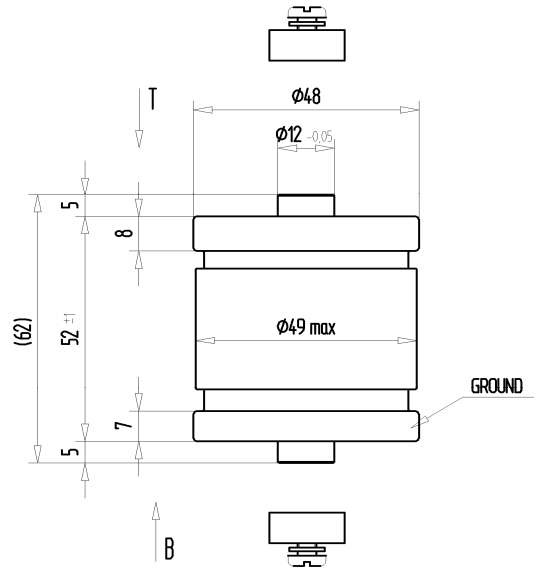


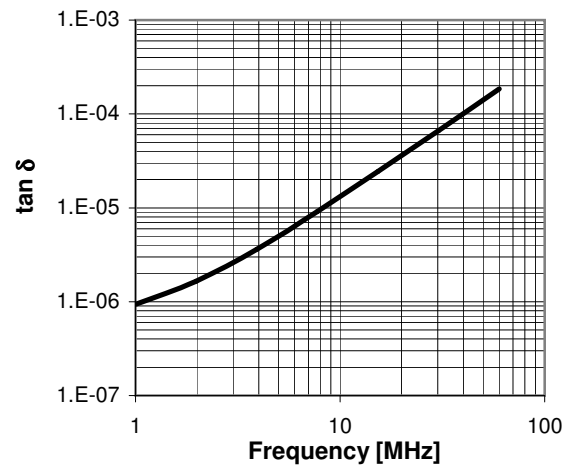
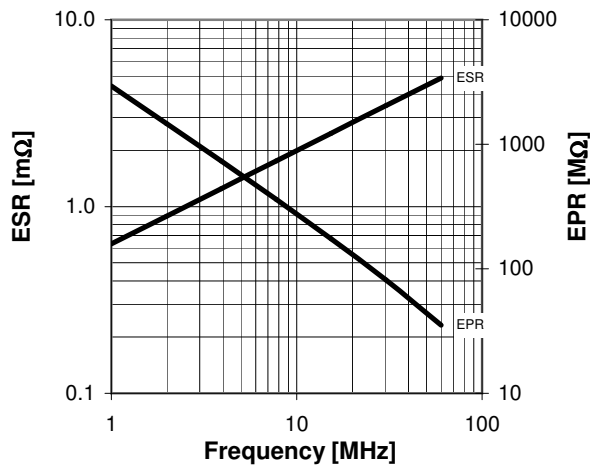
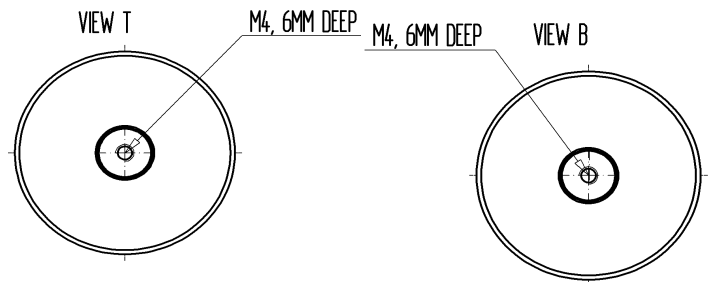
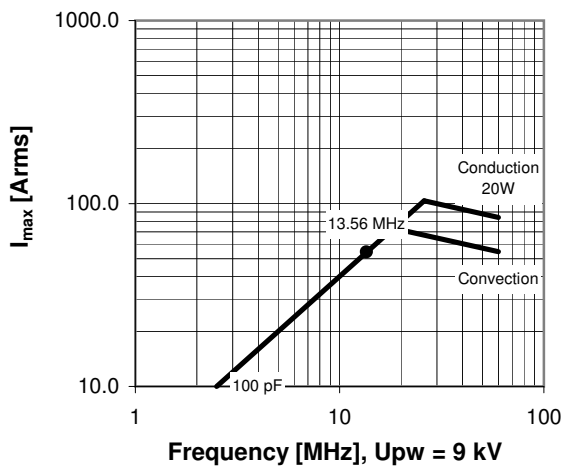
CFMN-100CAC/15-AF-G

Old Type Designation: MC1C-100E

Specifications	
Capacity C_{max} (nominal)	100 pF
Voltage (Peak Test U_{pt} / Peak Working U_{pw})	15 kV / 9 kV
Capacity Tolerance	5%
Max. Current I_{max} at 13.56 MHz with	54 Arms
Conduction Cooling	20 W
Net Weight	0.37 kg



I_{max} at 25°C ambient and 125°C surface temp. for convection and conduction (20 W) cooling



Special Features:

Capacity Tolerance 5%, RoHS Compliant

Subject to change without prior notice

Note: Technical information in Service Bulletin
SB-52 must be considered