

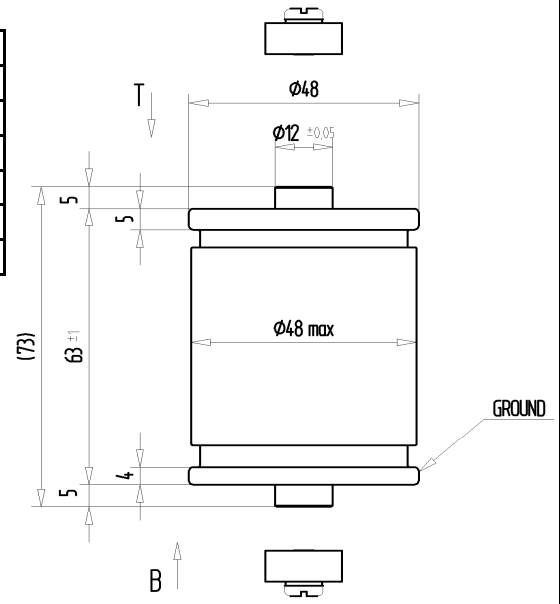
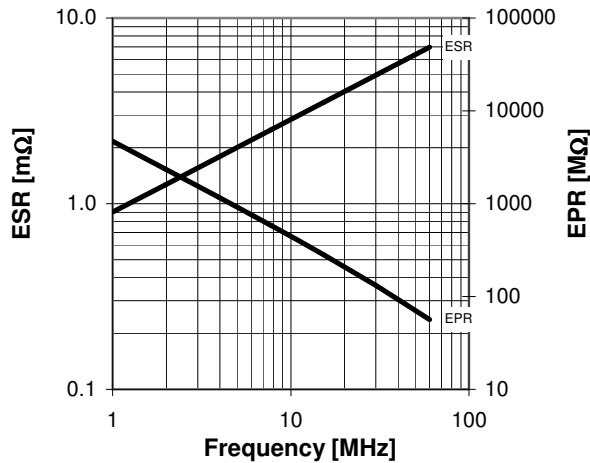
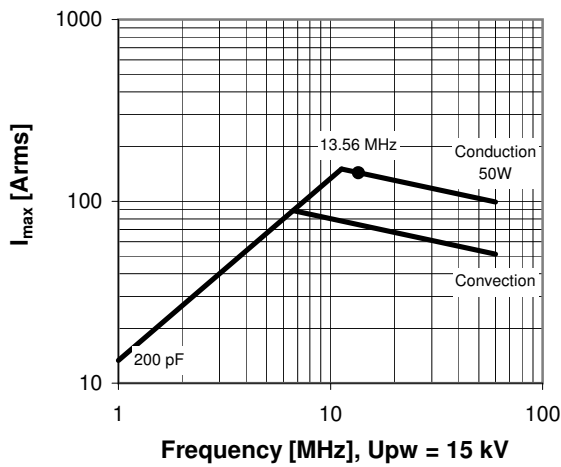
CFMN-200DAC/25-AF-G

Old Type Designation: MC2C-200E

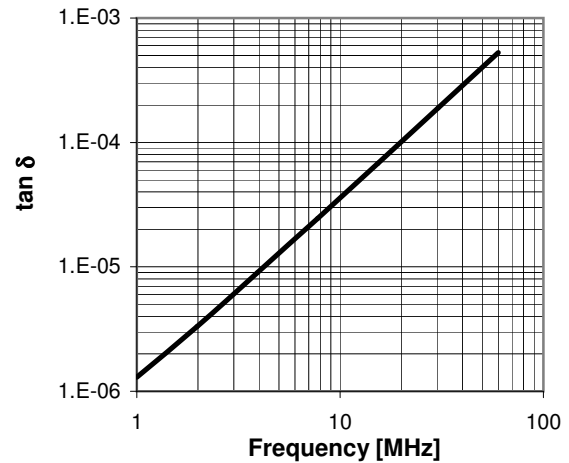
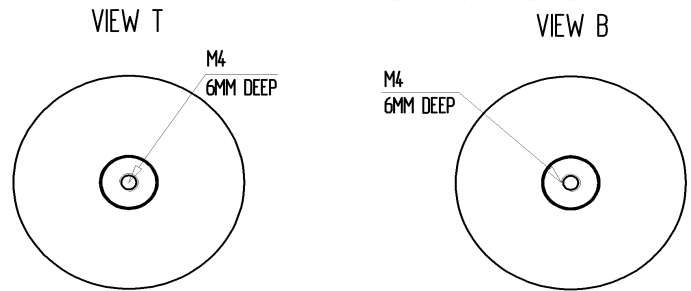
Specifications

Capacity C_{max} (nominal)	200 pF
Voltage (Peak Test U_{pt} / Peak Working U_{pw})	25 kV / 15 kV
Capacity Tolerance	5%
Max. Current I_{max} at 13.56 MHz with Conduction Cooling	143 Arms 50 W
Net Weight	0.52 kg

I_{max} at 25°C ambient and 125°C surface temp. for convection and conduction (50 W) cooling



MOUNTING KITS 058-070 ENCLOSED



Special Features:

Capacity Tolerance 5%