

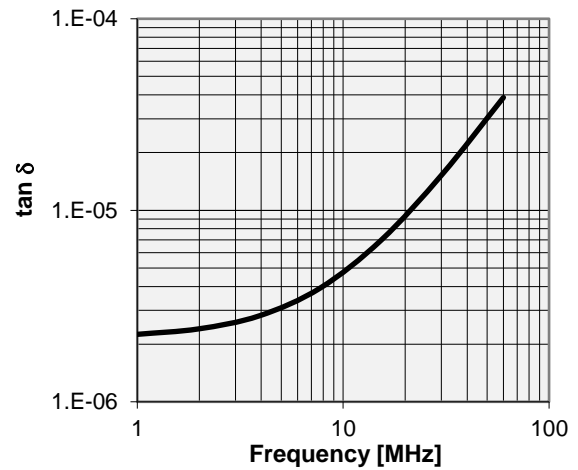
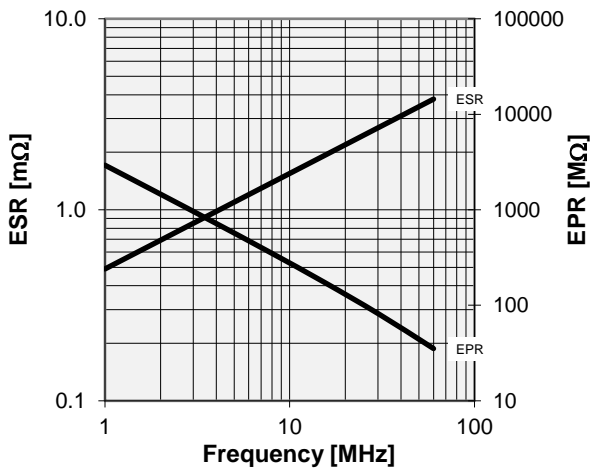
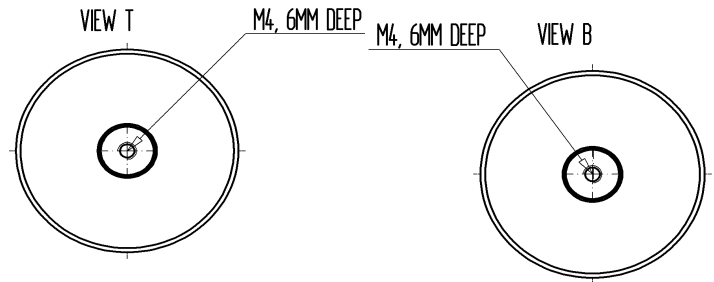
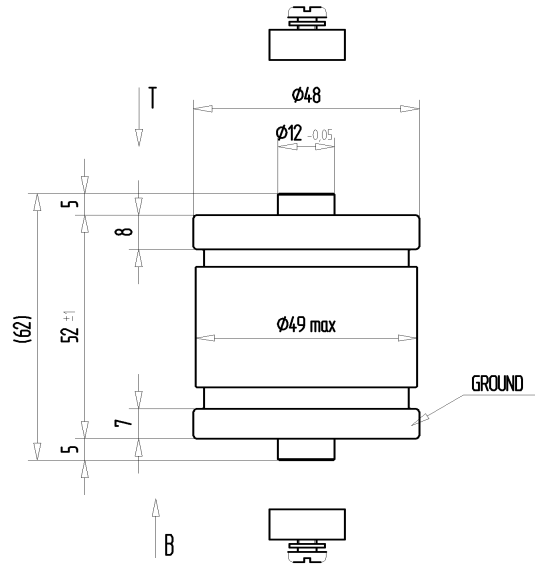
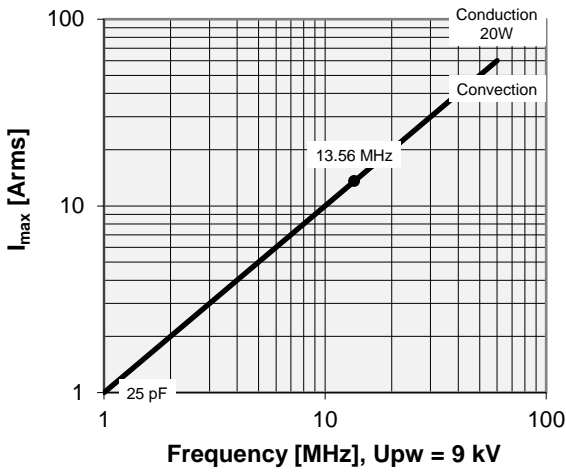
# CFMN-25CAC/15-AF

Old Type Designation: MC1C-25E

## Specifications

Capacity $C_{max}$ (nominal)	25 pF
Voltage (Peak Test $U_{pt}$ / Peak Working $U_{pw}$ )	15 kV / 9 kV
Capacity Tolerance	10%
Max. Current $I_{max}$ at 13.56 MHz with	13 Arms
Conduction Cooling	20 W
Net Weight	0.34 kg

$I_{max}$  at 25°C ambient and 125°C surface temp. for convection and conduction (20 W) cooling



Note:  
 Technical information in Service Bulletin  
 SB-52 must be considered  
 Subject to change without prior notice

Issue: 27-Mar-2006  
 Replaces: 16-Oct-2001