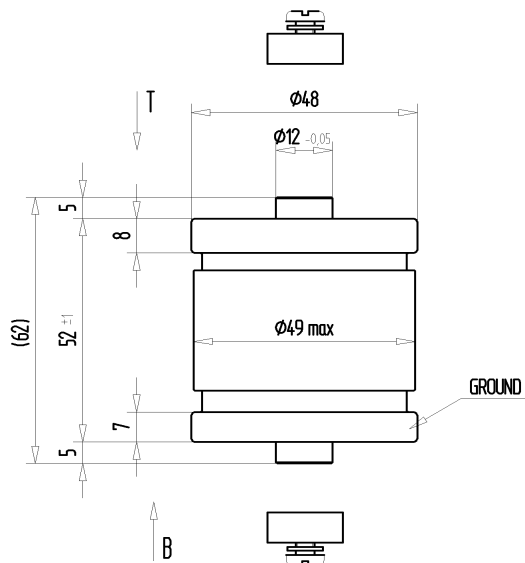


# CFMN-50CAC/15-AF

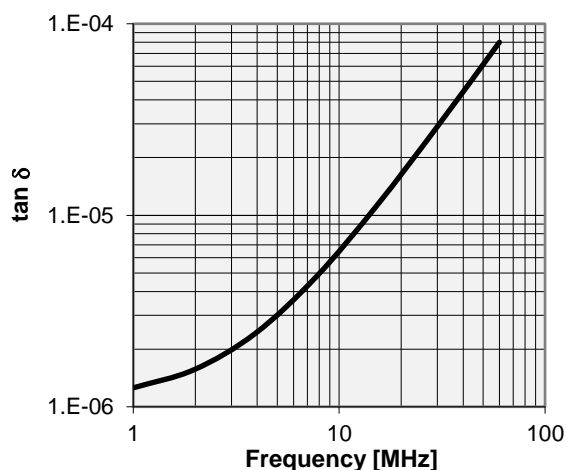
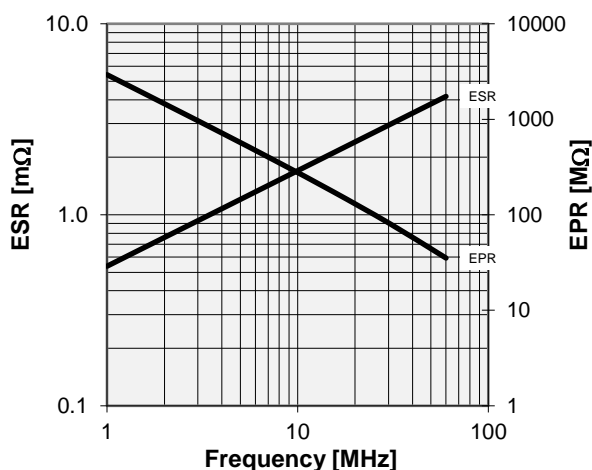
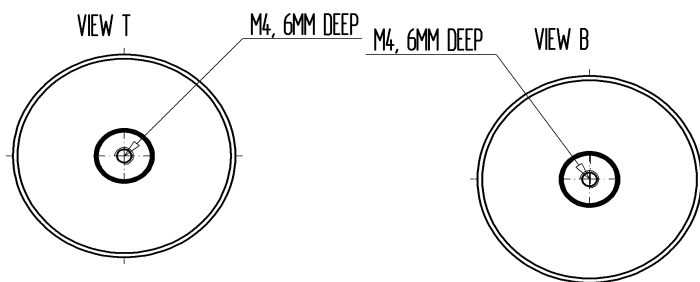
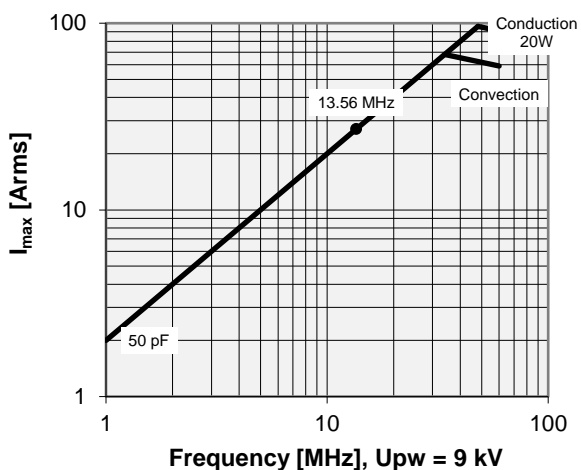
Old Type Designation: MC1C-50E

## Specifications

Capacity $C_{max}$ (nominal)	50 pF
Voltage (Peak Test $U_{pt}$ / Peak Working $U_{pw}$ )	15 kV / 9 kV
Capacity Tolerance	10%
Max. Current $I_{max}$ at 13.56 MHz with	27 Arms
Conduction Cooling	20 W
Net Weight	0.35 kg



$I_{max}$  at 25°C ambient and 125°C surface temp. for convection and conduction (20 W) cooling



Note:

Technical information in Service Bulletin SB-52 must be considered  
 Subject to change without prior notice

Issue: 18-Feb-2008  
 Replaces: 27-Mar-2006