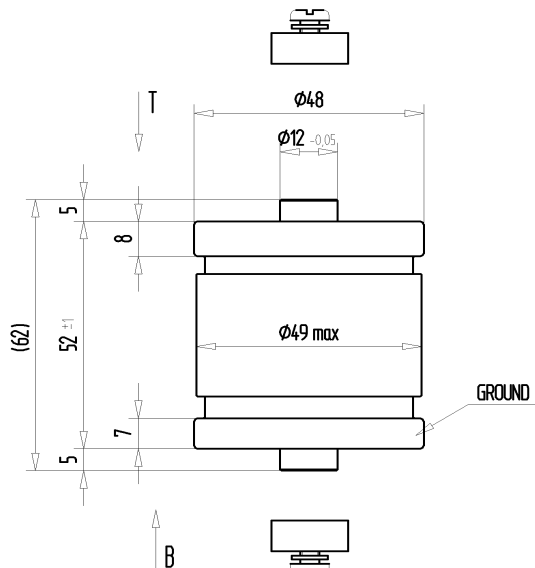


CFMN-90CAC/15-AF-G

Old Type Designation: MC1C-90E

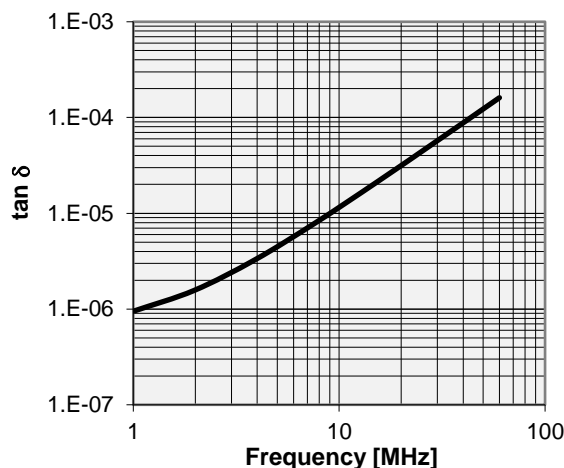
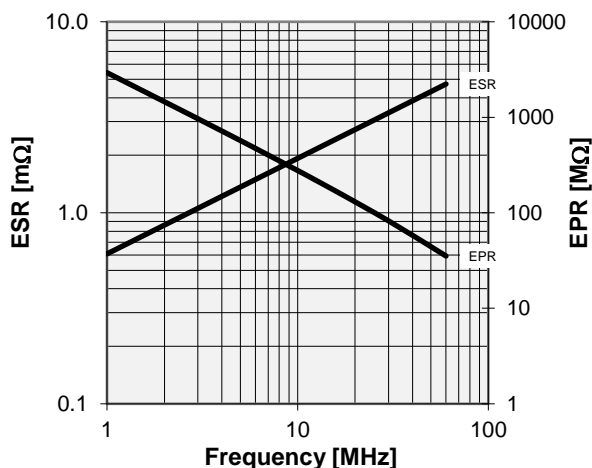
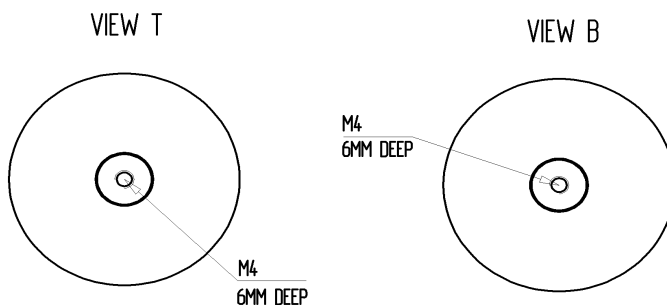
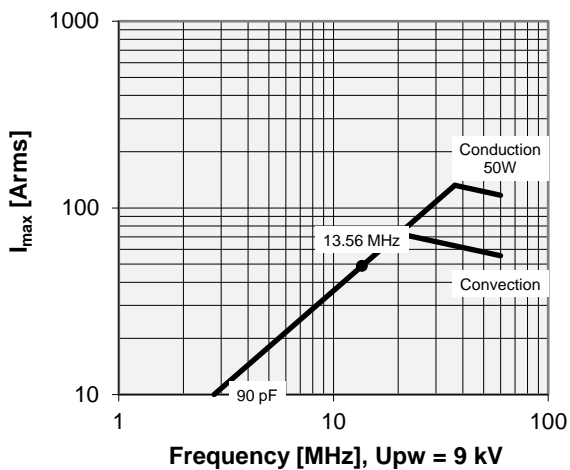
Specifications

Capacity C_{max} (nominal)	90 pF
Voltage (Peak Test U_{pt} / Peak Working U_{pw})	15 kV / 9 kV
Capacity Tolerance	5%
Max. Current I_{max} at 13.56 MHz with	48 Arms
Conduction Cooling	50 W
Net Weight	0.36 kg



MONTING KITS 058-070 ENCLOSED

I_{max} at 25°C ambient and 125°C surface temp. for convection and conduction (50 W) cooling



Type Ordering Information:	Upt
CFMN-90CAC/15-AF-G	15 kV

Special Features:
Capacity Tolerance 5%

Note:
 Technical information in Service Bulletin
 SB-52 must be considered
 Subject to change without prior notice

Issue: 16-Dec-2005