

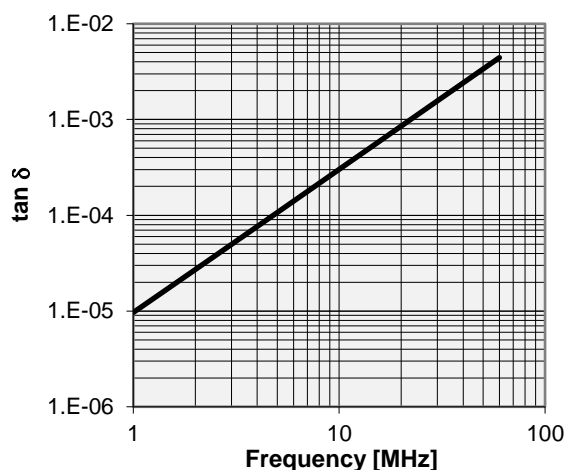
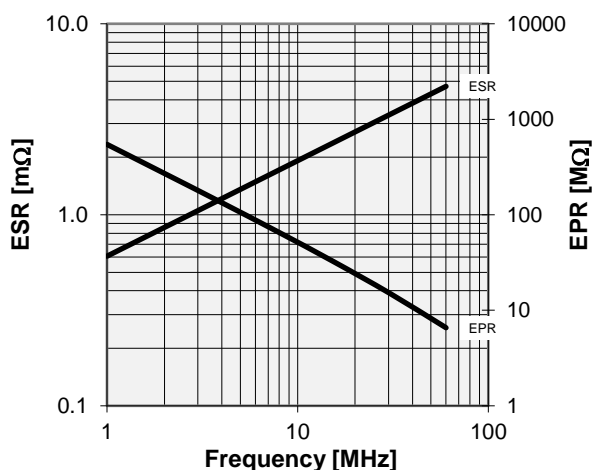
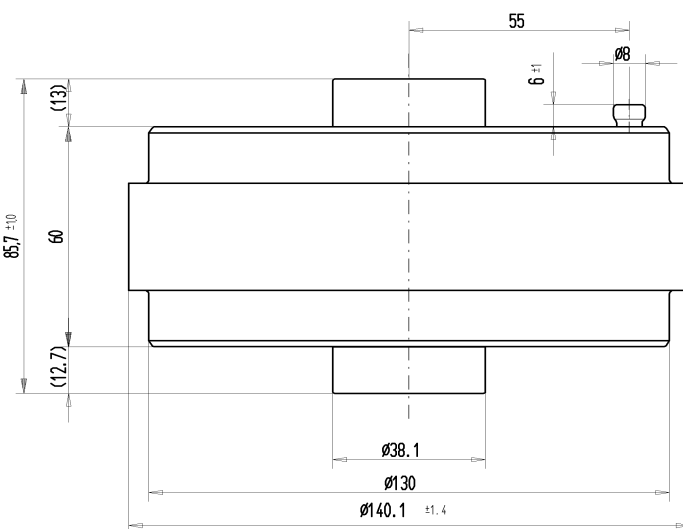
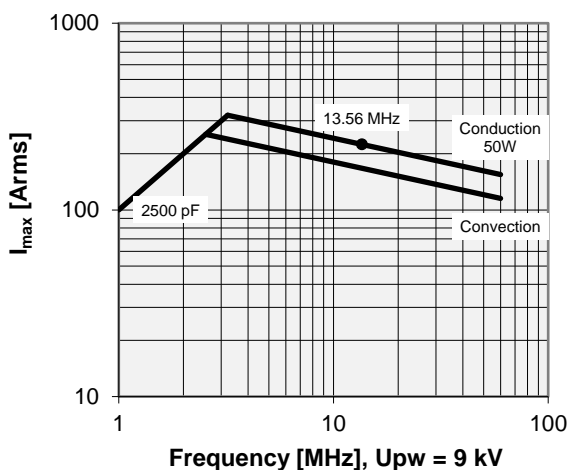
# CFSA-2500AAC/15-CA-G

Old Type Designation: CF1C-2500E

## Specifications

Capacity $C_{max}$ (nominal)	2500 pF
Voltage (Peak Test $U_{pt}$ / Peak Working $U_{pw}$ )	15 kV / 9 kV
Capacity Tolerance	5%
Max. Current $I_{max}$ at 13.56 MHz with	224 Arms
Conduction Cooling	50 W
Net Weight	3.1 kg
Mounting Flange (optional)	058-015

$I_{max}$  at 25°C ambient and 125°C surface temp. for convection and conduction (50 W) cooling



**Special Features:**

Capacity Tolerance 5%

Note:  
 Technical information in Service Bulletin  
 SB-52 must be considered  
 Subject to change without prior notice