

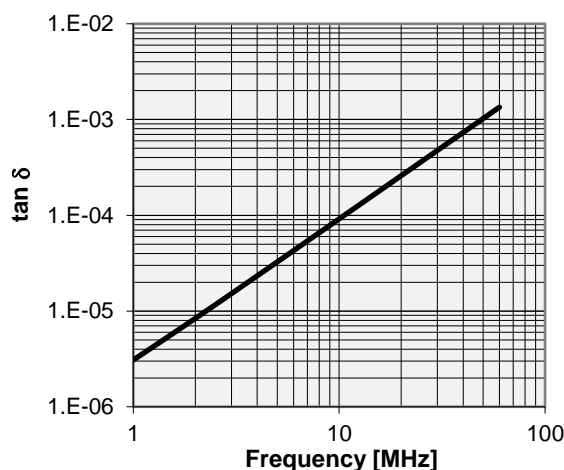
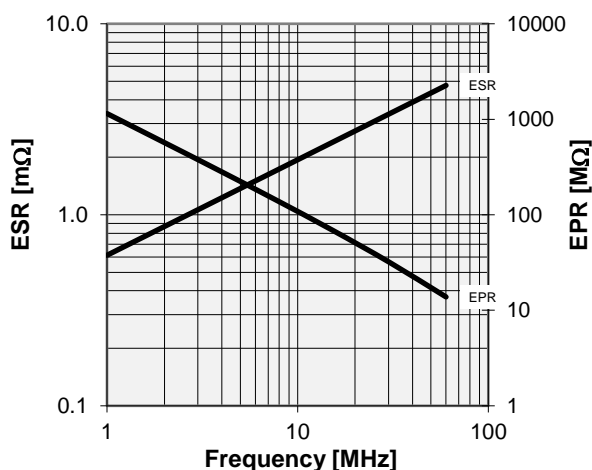
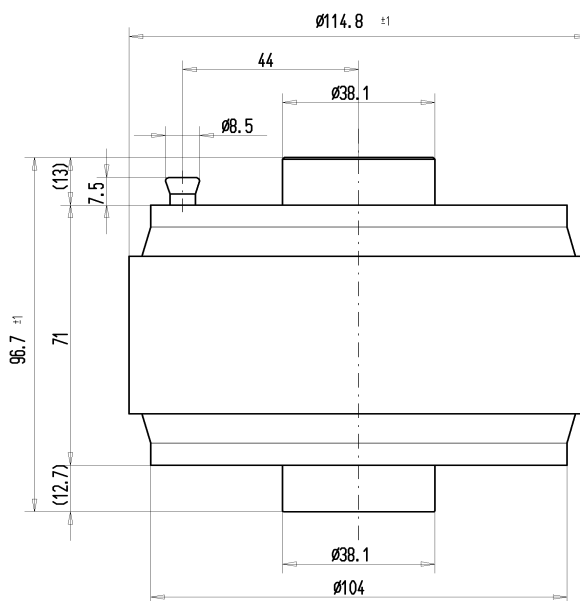
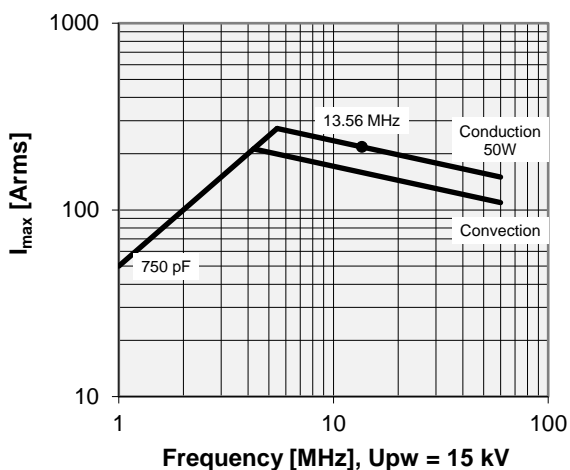
CFSA-750CAC/25-CA-G

Old Type Designation: CF1C-750F

Specifications

Capacity C_{max} (nominal)	750 pF
Voltage (Peak Test U_{pt} / Peak Working U_{pw})	25 kV / 15 kV
Capacity Tolerance	5%
Max. Current I_{max} at 13.56 MHz with	217 Arms
Conduction Cooling	50 W
Net Weight	2.1 kg

I_{max} at 25°C ambient and 125°C surface temp. for convection and conduction (50 W) cooling



Type Ordering Information:	Upt
CFSA-750CAC/25-CA-G	25 kV
CFSA-750CAC/20-CA-G	20 kV
CFSA-750CAC/15-CA-G	15 kV

Special Features:
Capacity Tolerance 5%

Note:
 Technical information in Service Bulletin
 SB-52 must be considered
 Subject to change without prior notice