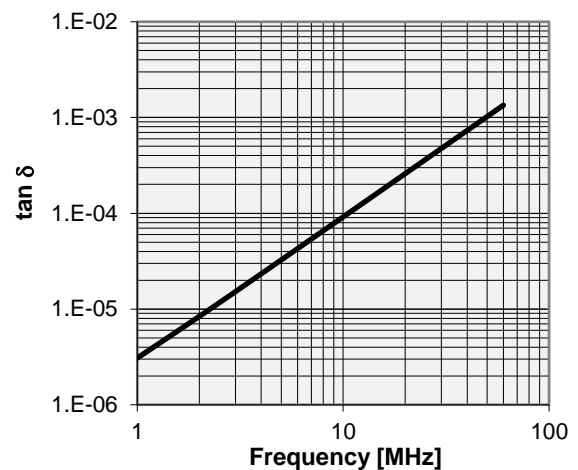
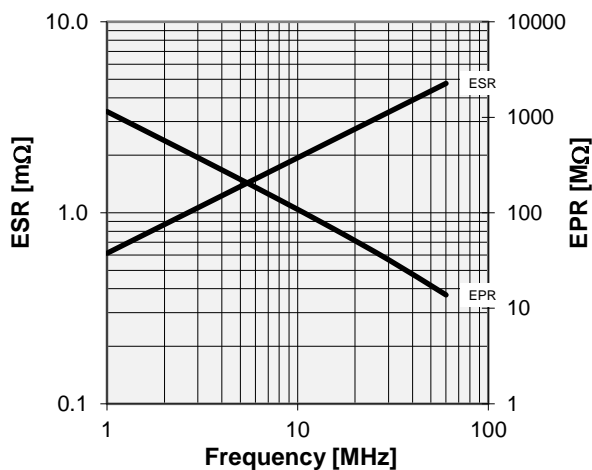
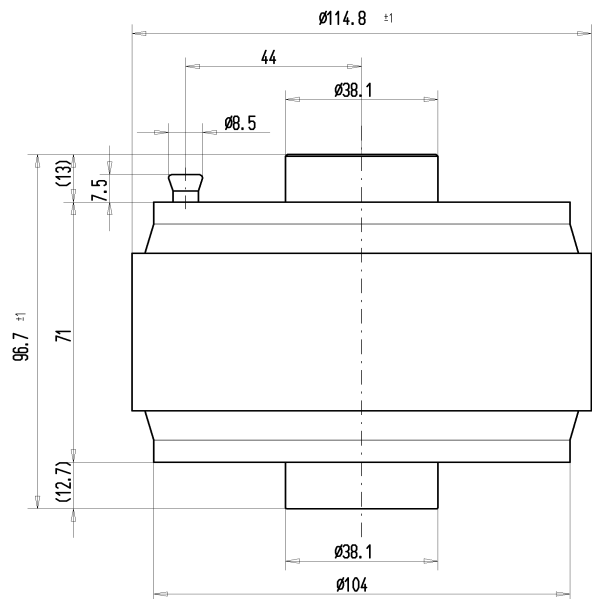
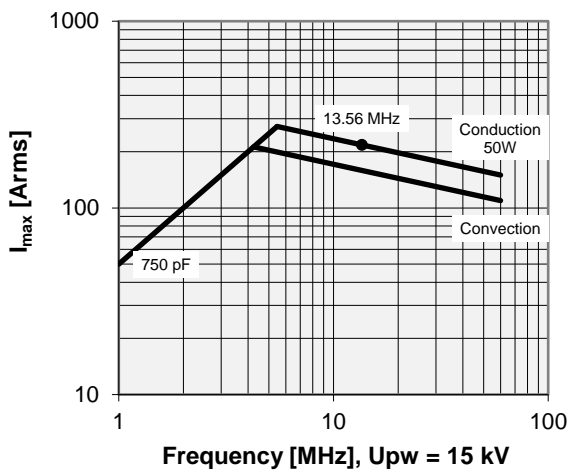


CFSA-750CAC/25-CA-H

Specifications

Capacity C_{max} (nominal)	750 pF
Voltage (Peak Test U_{pt} / Peak Working U_{pw})	25 kV / 15 kV
Capacity Tolerance	2%
Max. Current I_{max} at 13.56 MHz with	217 Arms
Conduction Cooling	50 W
Net Weight	2.1 kg

I_{max} at 25°C ambient and 125°C surface temp. for convection and conduction (50 W) cooling



Special Features:
Special C-Curve / Special Capacity Tolerance

Note:
Technical information in Service Bulletin
SB-52 must be considered
Subject to change without prior notice