

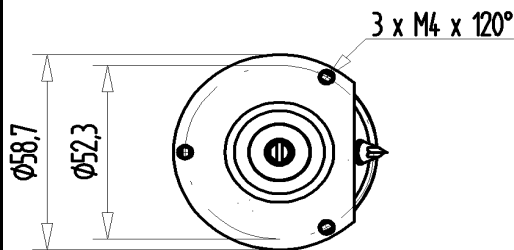
CVBA-1000BC/3-BEA-L

Old Type Designation: CV03C-1000E

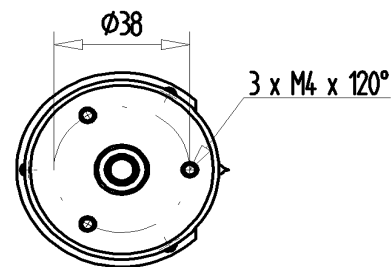
Specifications

Capacity C_{max} (nominal)	1000 pF
Capacity C_{min} (nominal)	5 pF
Voltage (Peak Test U_{pt} / Peak Working U_{pw})	3 kV / 1.8 kV
Capacity Tolerance (linear Range)	10%
Max. Current I_{max} at 13.56 MHz with	56 Arms
Conduction Cooling	10 W
Self Inductance	≤ 11 nH
Capacitance per turn	61.7 pF/turn
Torque	≤ 0.15 Nm
Net Weight	0.6 kg

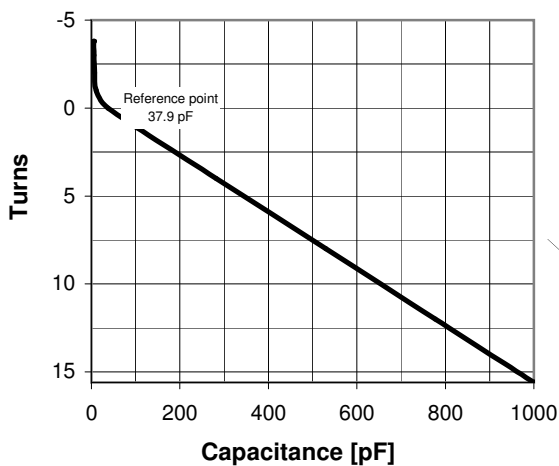
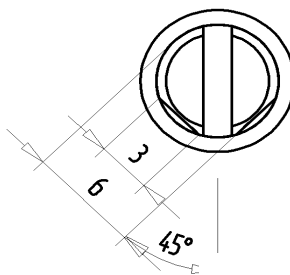
VIEW T



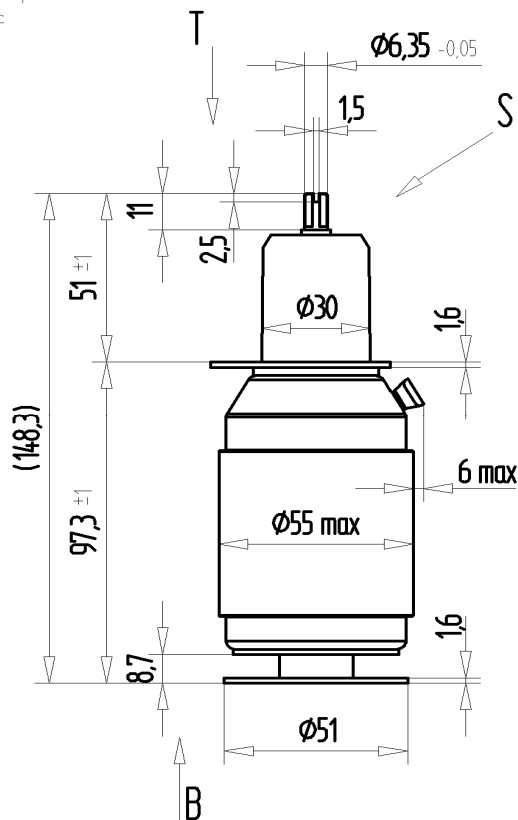
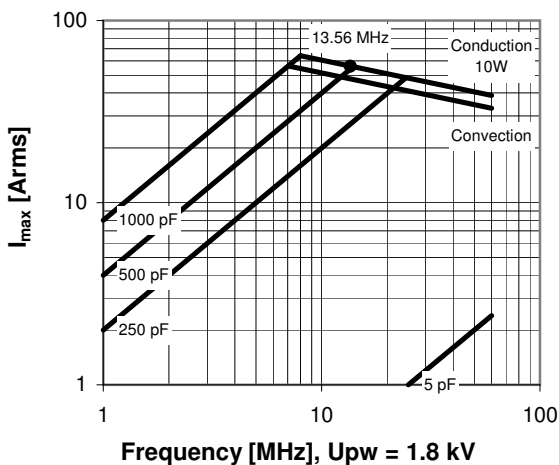
VIEW B



VIEW S



I_{max} at 25°C ambient and 125°C surface temp. for convection and conduction (10 W) cooling



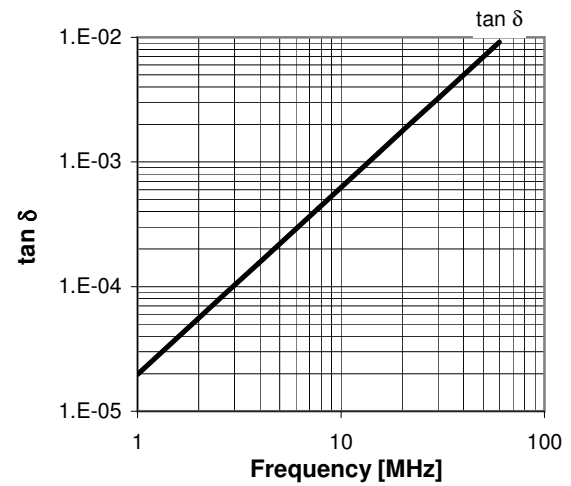
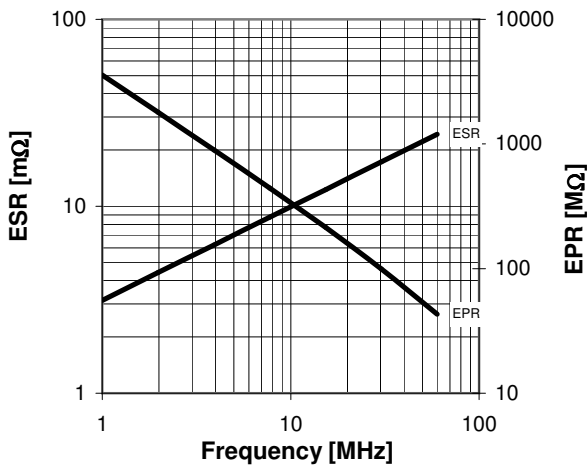
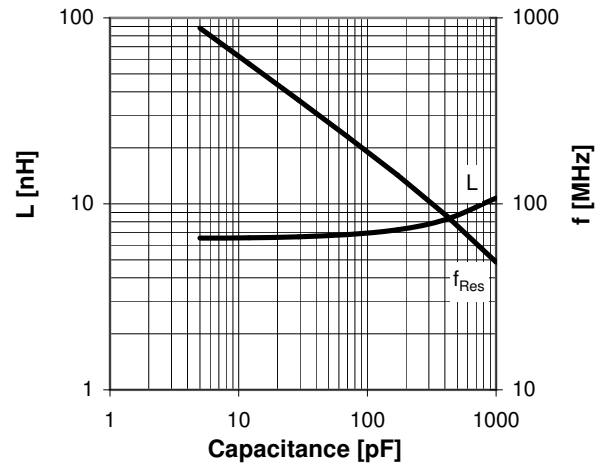
Subject to change without prior notice

Note: Technical information in Service Bulletin SB-52 must be considered

Turns	Nominal Capacitance [pF]	Tolerance
-3.8	5.0	10%
-3.0	5.7	10%
-2.0	7.2	10%
-1.0	11.1	10%
0.0	37.9	0%
4.0	282.3	10%
8.0	529.6	10%
12.0	776.9	10%
15.6	1000.0	10%

Mechanical stop at < 5 pF at ~ -5.5 turns
Mechanical stop at > 1000 pF at ~ 16 turns

Self inductance and resonance frequency



Special Features:

Integrated Flange

Subject to change without prior notice

Note: Technical information in Service Bulletin
SB-52 must be considered