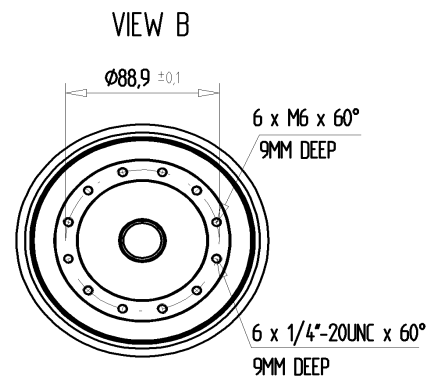
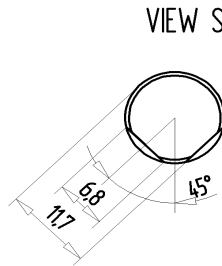
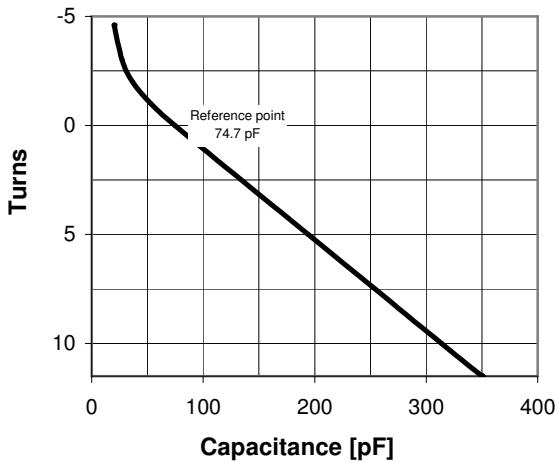
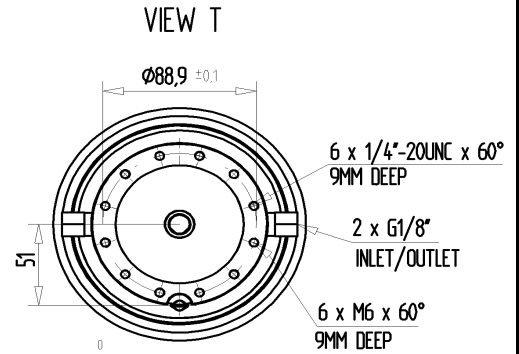
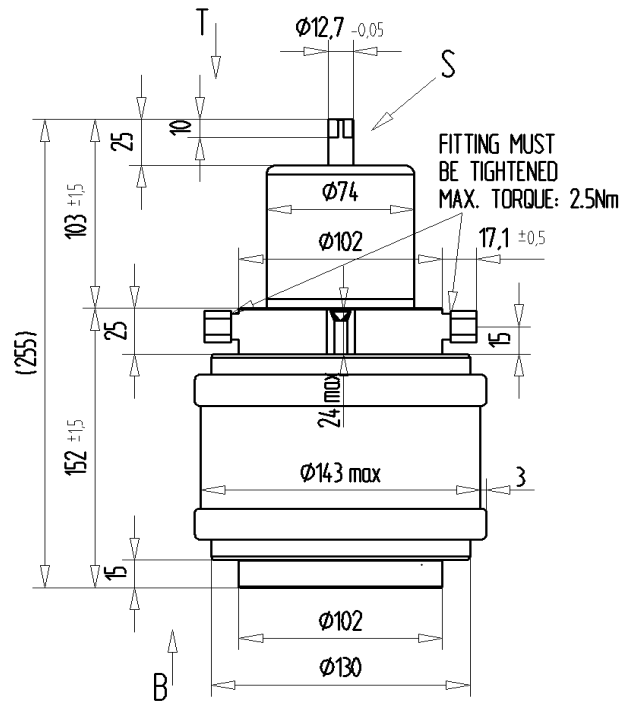
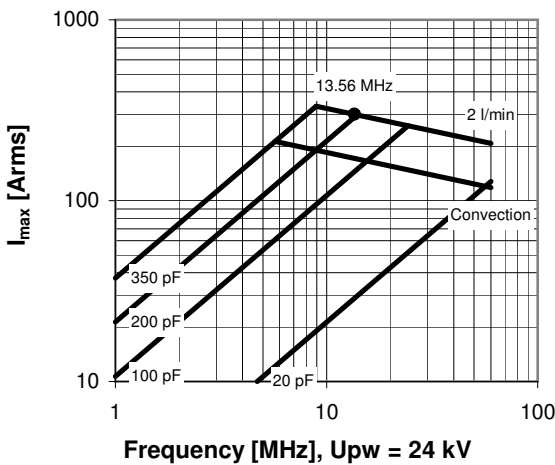


CVHI-350AW/40-ADUD

Specifications	
Capacity C_{max} (nominal)	350 pF
Capacity C_{min} (nominal)	20 pF
Voltage (Peak Test U_{pt} / Peak Working U_{pw})	40 kV / 24 kV
Capacity Tolerance (linear Range)	10%
Max. Current I_{max} at 13.56 MHz with	300 Arms
Water Cooling	2 l/min
Self Inductance	≤ 15 nH
Capacitance per turn	23.9 pF/turn
Torque	≤ 0.8 Nm
Net Weight	6.5 kg



I_{max} for 2 l/min water cooling; max. water temp. at inlet: 70°C;
fixed end has to be cooled with min. 50 W



CVHI-350AW/40-ADUD

Turns	Nominal Capacitance [pF]	Tolerance
-4.6	20.0	10%
-3.0	27.4	10%
-2.0	36.6	10%
-1.0	52.8	10%
0.0	74.7	0%
5.0	194.1	10%
10.0	313.8	10%
11.5	350.0	10%

Mechanical stop at < 20 pF at ~ -9.3 turns
Mechanical stop at > 350 pF at ~ 11.8 turns

Self inductance and resonance frequency

