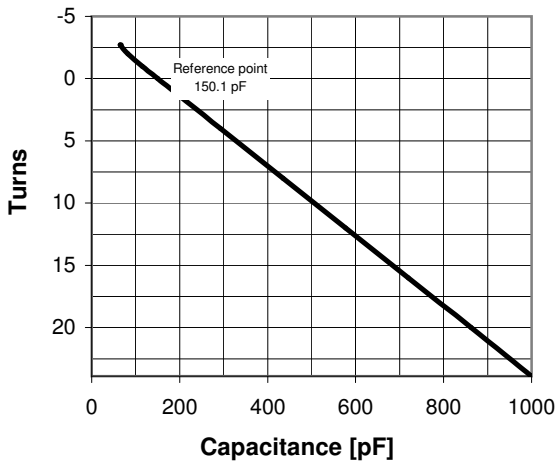
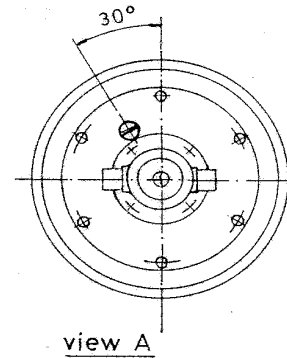


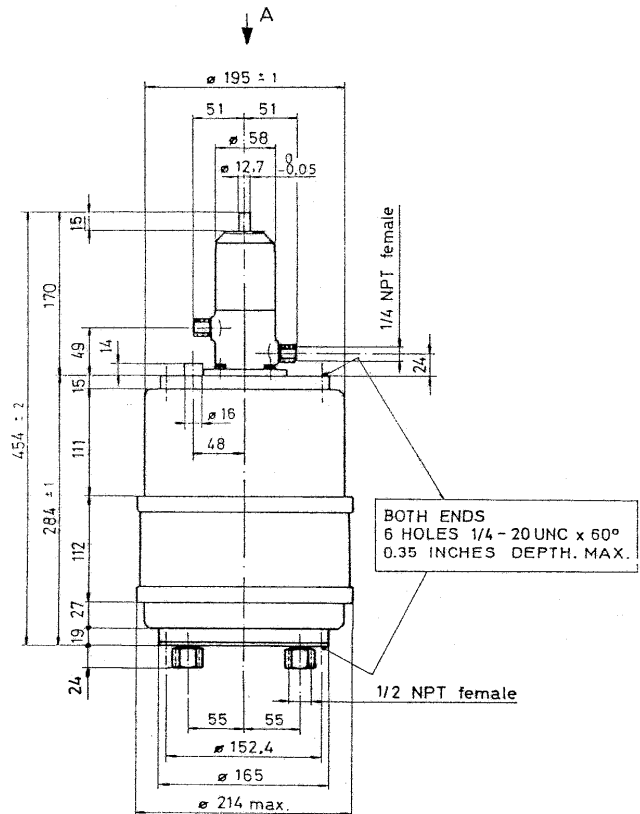
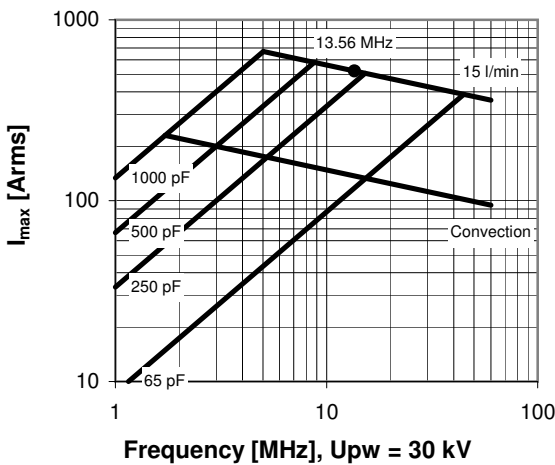
CVLA-1000BW/50-AAE-RV2

Old Type Designation: CV3W-1000N

Specifications	
Capacity C_{max} (nominal)	1000 pF
Capacity C_{min} (nominal)	65 pF
Voltage (Peak Test U_{pt} / Peak Working U_{pw})	50 kV / 30 kV
Capacity Tolerance (linear Range)	10%
Max. Current I_{max} at 13.56 MHz with	521 Arms
Water Cooling	15 l/min
Self Inductance	≤ 39 nH
Capacitance per turn	35.6 pF/turn
Torque	≤ 1.5 Nm
Net Weight	18 kg



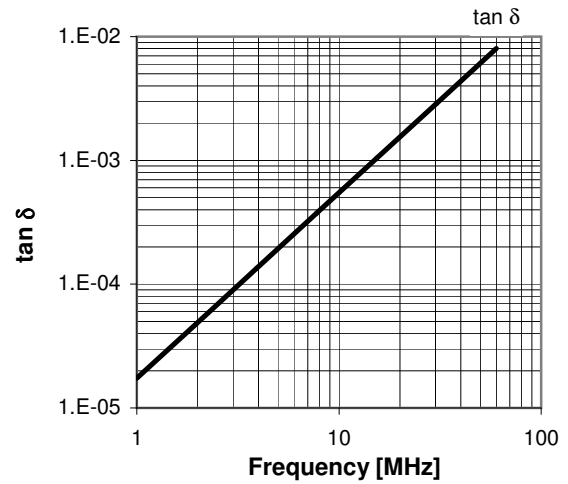
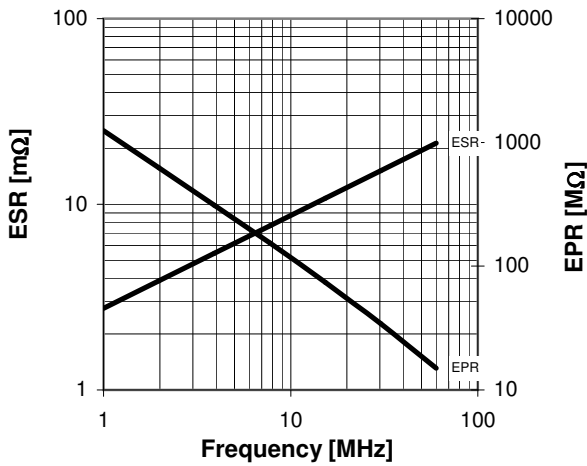
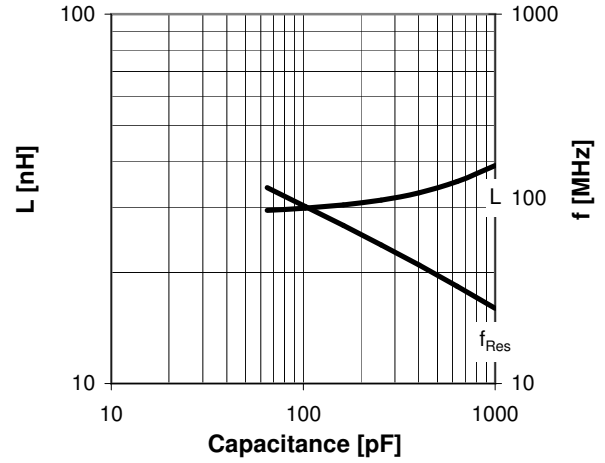
I_{max} for 15 l/min water cooling; max. water temp. at inlet: 70°C;
fixed end has to be water cooled with min. 4 l/min



Turns	Nominal Capacitance [pF]	Tolerance
-2.7	65.0	10%
-2.0	82.4	10%
-1.0	115.0	10%
0.0	150.1	0%
4.0	292.4	10%
8.0	435.1	10%
12.0	577.4	10%
16.0	719.9	10%
20.0	862.5	10%
23.9	1000.0	10%

Mechanical stop at < 65 pF at ~ -5.5 turns
Mechanical stop at > 1000 pF at ~ 24.3 turns

Self inductance and resonance frequency



Special Features:

Cooling Plate included, Special Water-Fitting