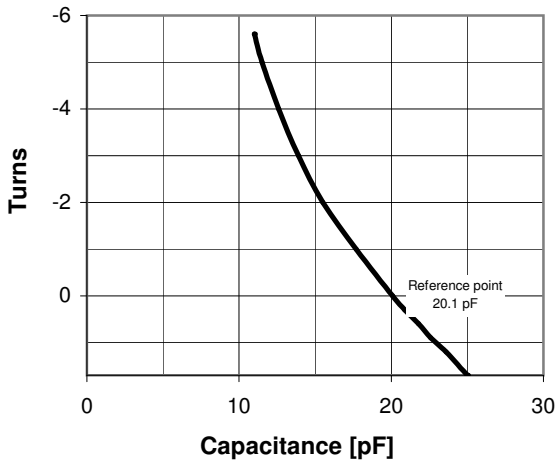


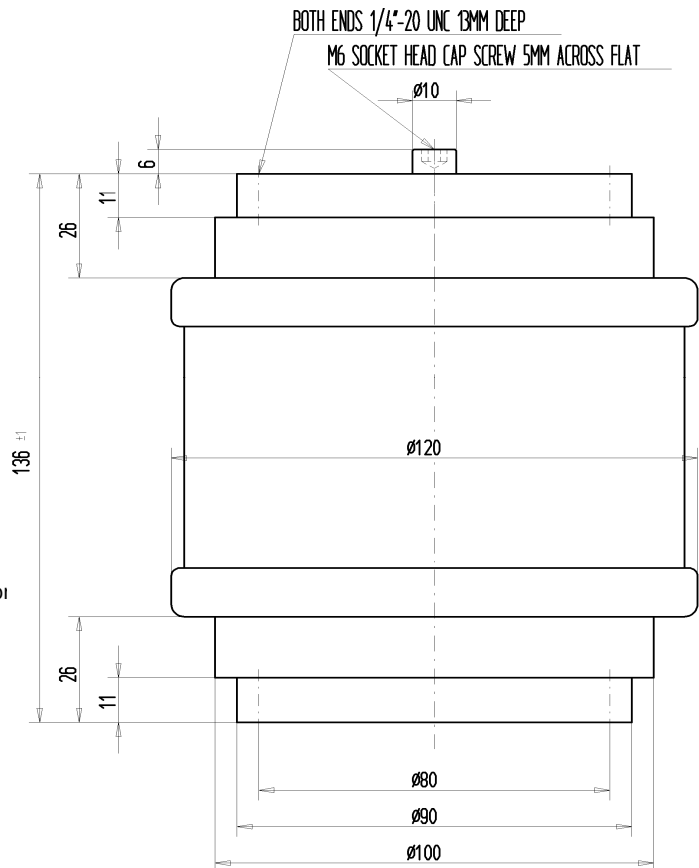
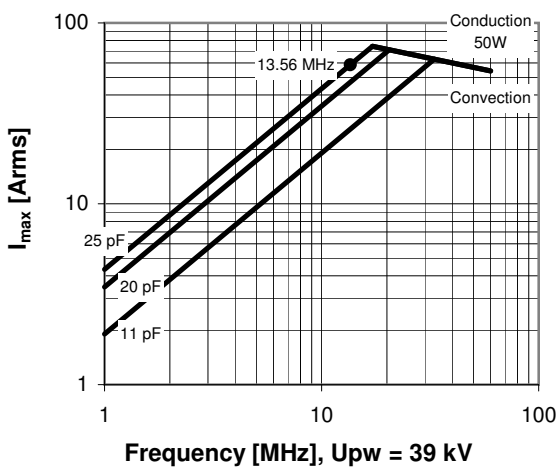
CVNA-25AC/65-PHT

Old Type Designation: CV3C-25E

Specifications	
Capacity C_{max} (nominal)	25 pF
Capacity C_{min} (nominal)	11 pF
Voltage (Peak Test U_{pt} / Peak Working U_{pw})	65 kV / 39 kV
Capacity Tolerance (linear Range)	10%
Max. Current I_{max} at 13.56 MHz with Conduction Cooling	58 Arms
Conduction Cooling	50 W
Capacitance per turn	2.9 pF/turn
Torque	≤ 0.3 Nm
Net Weight	2.7 kg



I_{max} at 25°C ambient and 125°C surface temp. for convection and conduction (50 W) cooling



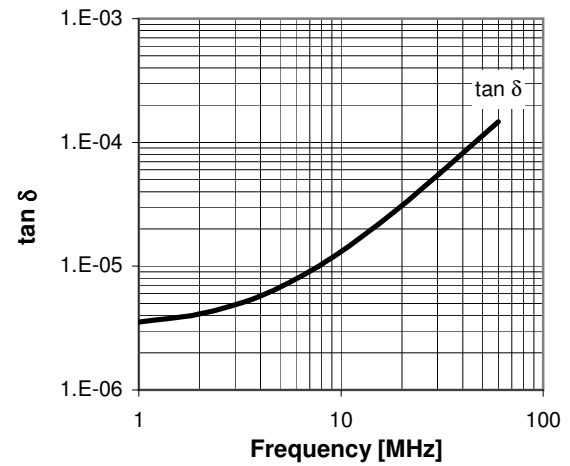
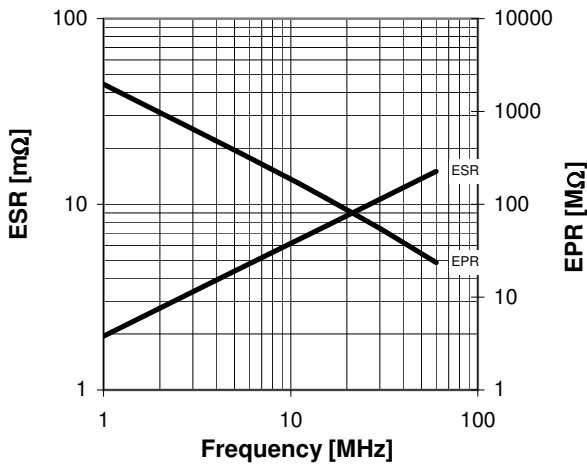
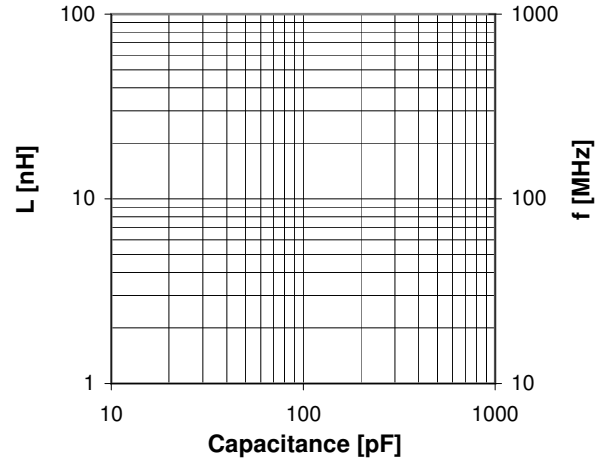
CVNA-25AC/65-PHT

Old Type Designation: CV3C-25E

Turns	Nominal Capacitance [pF]	Tolerance
-5.6	11.0	10%
-5.0	11.5	10%
-4.0	12.6	10%
-3.0	13.9	10%
-2.0	15.5	10%
-1.0	17.7	10%
0.0	20.1	0%
0.3	20.9	10%
0.6	21.8	10%
0.9	22.6	10%
1.2	23.6	10%
1.7	25.0	10%

Mechanical stop at < 11 pF at ~ -6.5 turns
Mechanical stop at > 25 pF at ~ 2.2 turns

Self inductance and resonance frequency



Type Ordering Information:	Upt
CVNA-25AC/65-PHT	65 kV
CVNA-25AC/60-PHT	60 kV
CVNA-25AC/55-PHT	55 kV