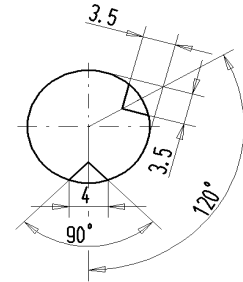


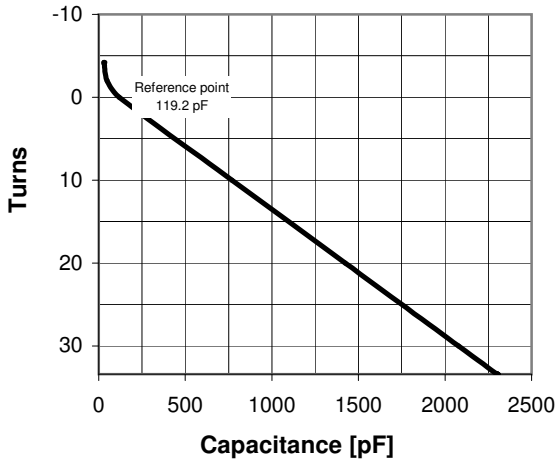
CVSA-2300AC/15-ABB-H

Specifications

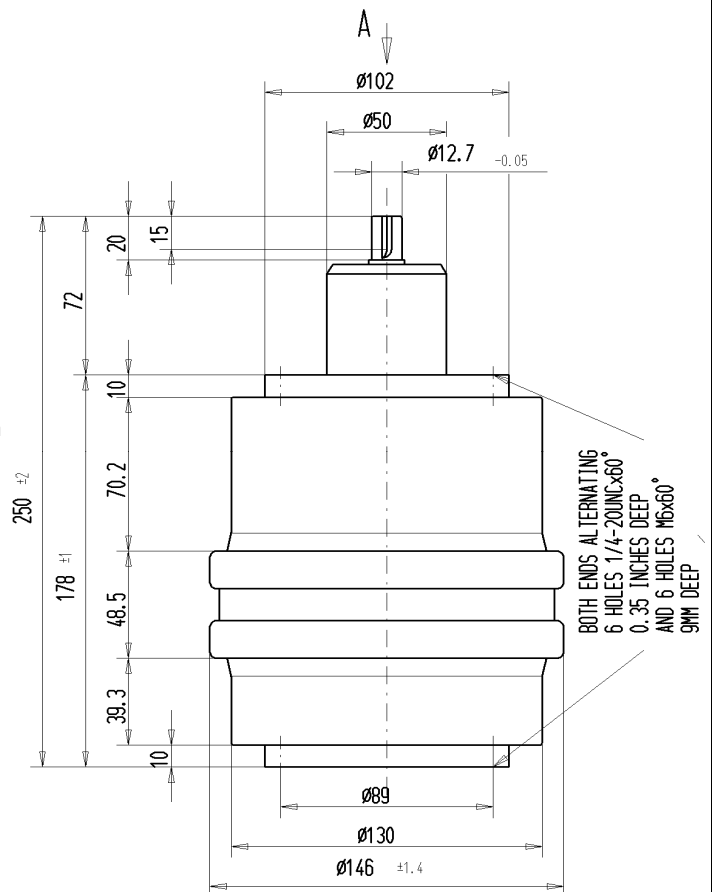
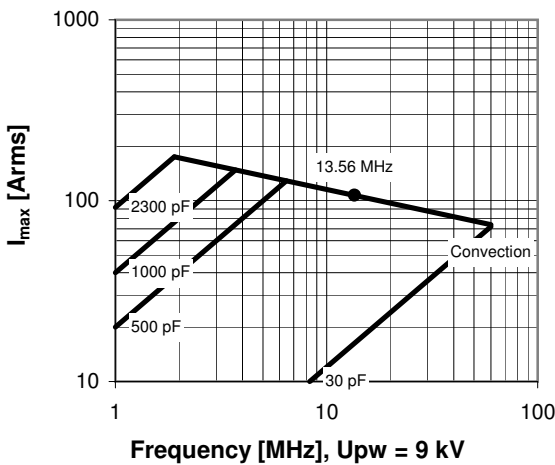
| | |
|---|----------------|
| Capacity C_{max} (nominal) | 2300 pF |
| Capacity C_{min} (nominal) | 30 pF |
| Voltage (Peak Test U_{pt} / Peak Working U_{pw}) | 15 kV / 9 kV |
| Capacity Tolerance (linear Range) | 2% |
| Max. Current I_{max} at 13.56 MHz | 106 Arms |
| Self Inductance | ≤ 22 nH |
| Capacitance per turn | 65.3 pF/turn |
| Torque | ≤ 0.75 Nm |
| Net Weight | 5.5 kg |



View A S: 2:1



I_{max} at 25°C ambient and 125°C surface temp. for convection cooling

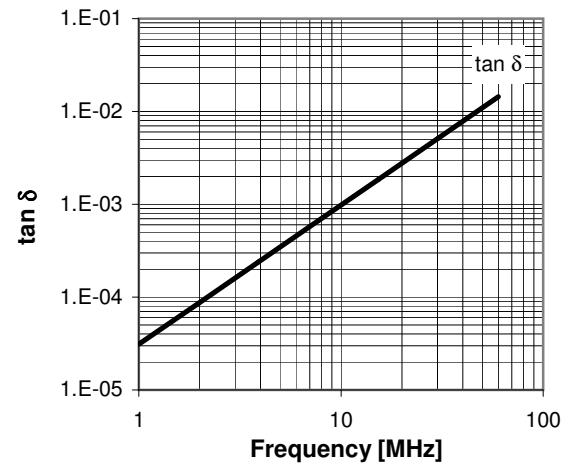
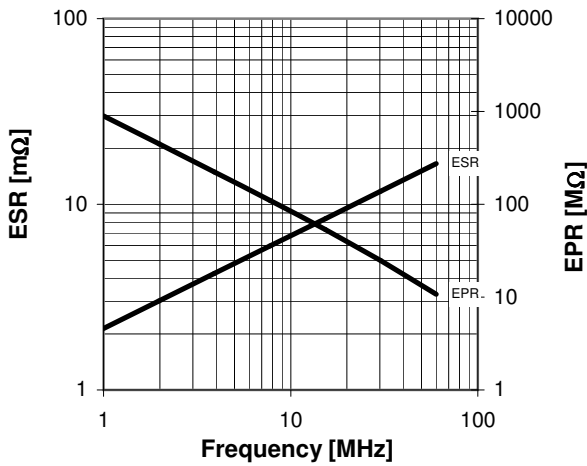
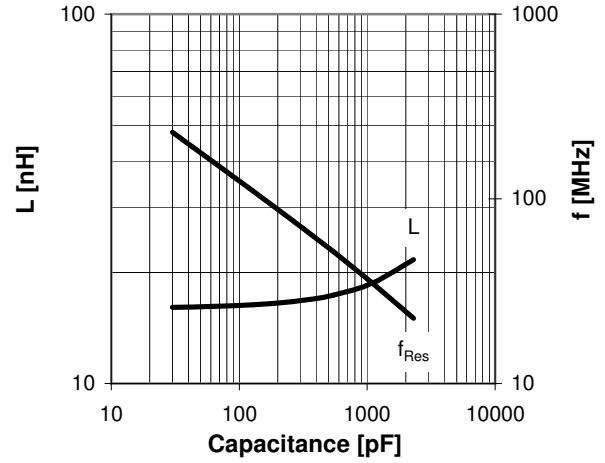


CVSA-2300AC/15-ABB-H

| Turns | Nominal Capacitance [pF] | Tolerance |
|-------|--------------------------|-----------|
| -4.2 | 30.0 | 2% |
| -4.0 | 31.5 | 2% |
| -2.0 | 48.3 | 2% |
| 0.0 | 119.2 | 0% |
| 10.0 | 769.8 | 2% |
| 20.0 | 1423.8 | 2% |
| 30.0 | 2077.8 | 2% |
| 33.4 | 2300.0 | 2% |

Mechanical stop at < 30 pF at ~ -8.2 turns
Mechanical stop at > 2300 pF at ~ 33.6 turns

Self inductance and resonance frequency



Special Features:

Special C-Curve / Special Capacity Tolerance