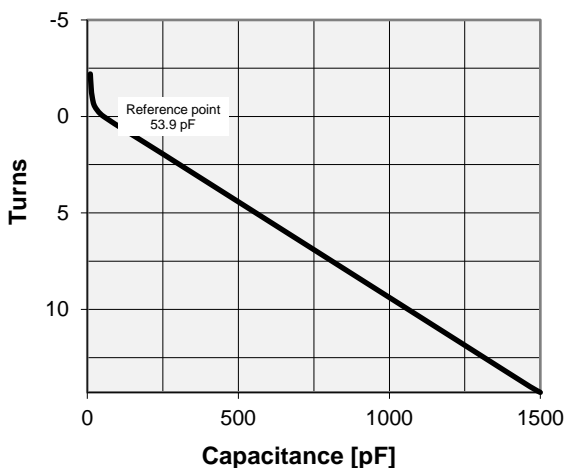
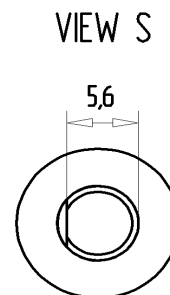


# CVVI-1500AC/5-ACD-M

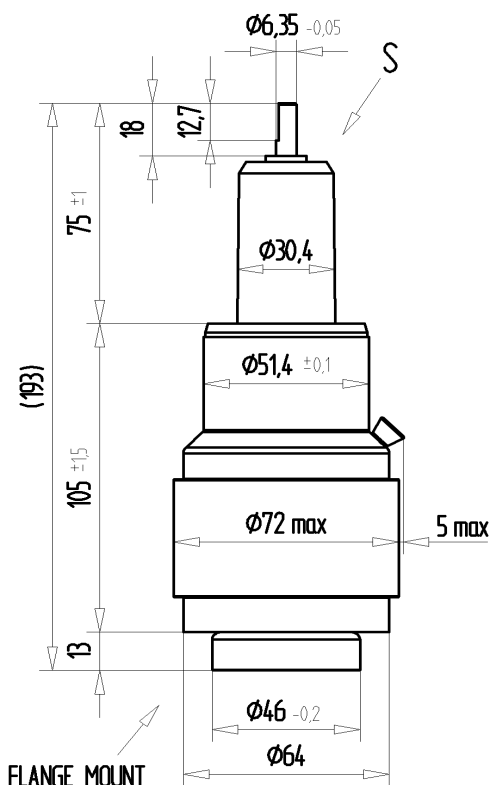
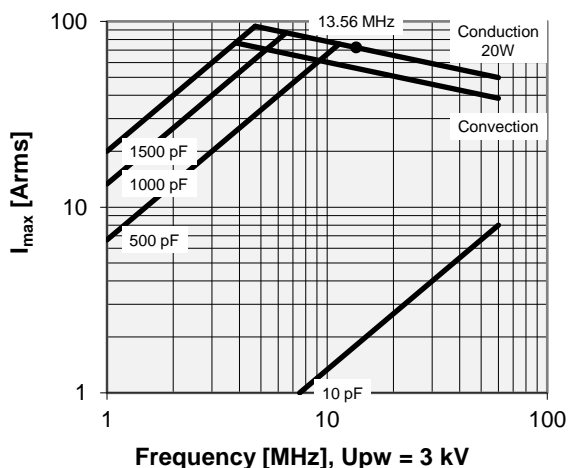
Old Type Designation: CV05C-1500N

## Specifications

Capacity $C_{max}$ (nominal)	1500 pF
Capacity $C_{min}$ (nominal)	10 pF
Voltage (Peak Test $U_{pt}$ / Peak Working $U_{pw}$ )	5 kV / 3 kV
Capacity Tolerance (linear Range)	10%
Max. Current $I_{max}$ at 13.56 MHz with	72 Arms
Conduction Cooling	20 W
Capacitance per turn	101.1 pF/turn
Torque	$\leq 0.3$ Nm
Net Weight	1.2 kg
Mounting Flange (optional)	058-010/030



$I_{max}$  at 25°C ambient and 125°C surface temp. for convection and conduction (20 W) cooling



Note:

Technical information in Service Bulletin SB-52 must be considered  
Subject to change without prior notice

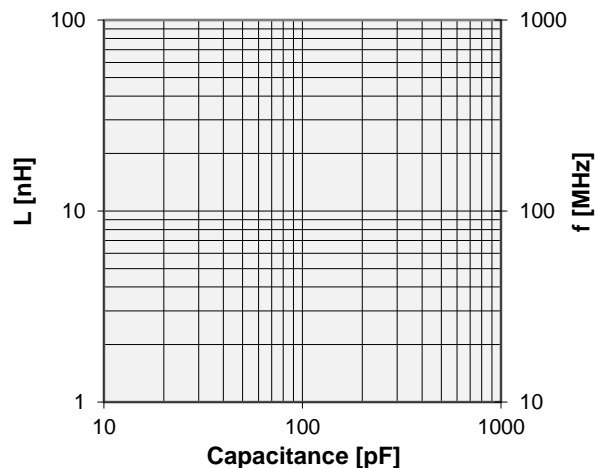
Issue: 15-Mar-2010  
Replaces: 19-Apr-2006

# CVVI-1500AC/5-ACD-M

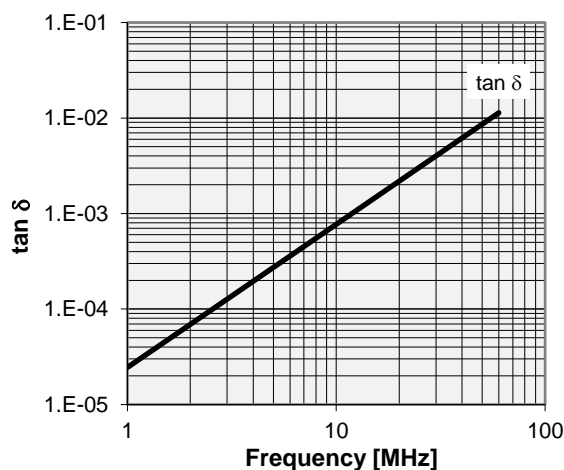
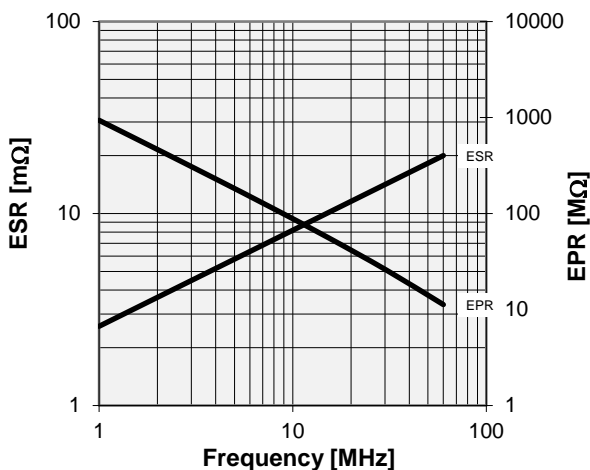
Old Type Designation: CV05C-1500N

Turns	Nominal Capacitance [pF]	Tolerance
-2.4	10.0	10%
-1.5	12.7	10%
-1.0	16.3	10%
-0.5	25.3	10%
0.0	53.9	0%
2.0	255.6	10%
4.0	457.3	10%
6.0	659.0	10%
8.0	860.7	10%
10.0	1062.4	10%
12.0	1264.1	10%
14.0	1465.7	10%
14.3	1500.0	10%

Self inductance and resonance frequency



Mechanical stop at < 10 pF at ~ -6.4 turns  
 Mechanical stop at > 1500 pF at ~ 14.5 turns



<b>Special Features:</b>
Flange-Mount

Note:  
 Technical information in Service Bulletin  
 SB-52 must be considered  
 Subject to change without prior notice