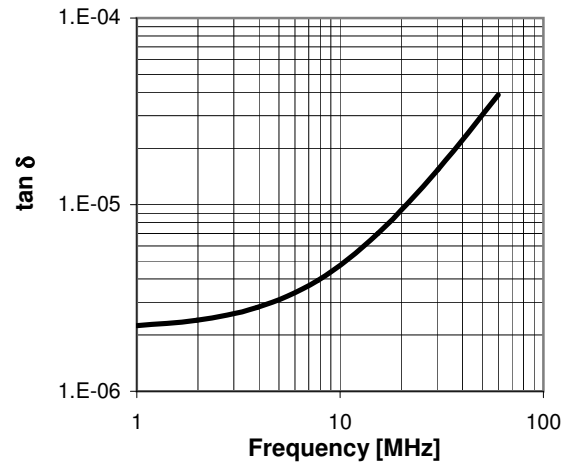
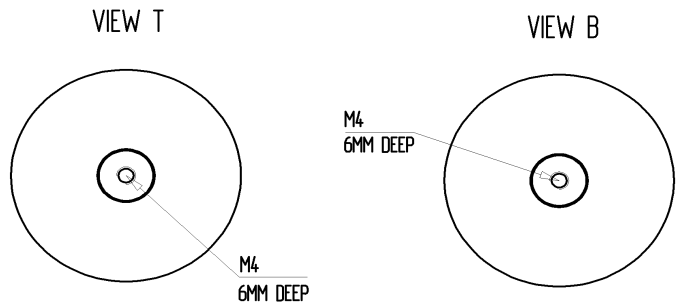
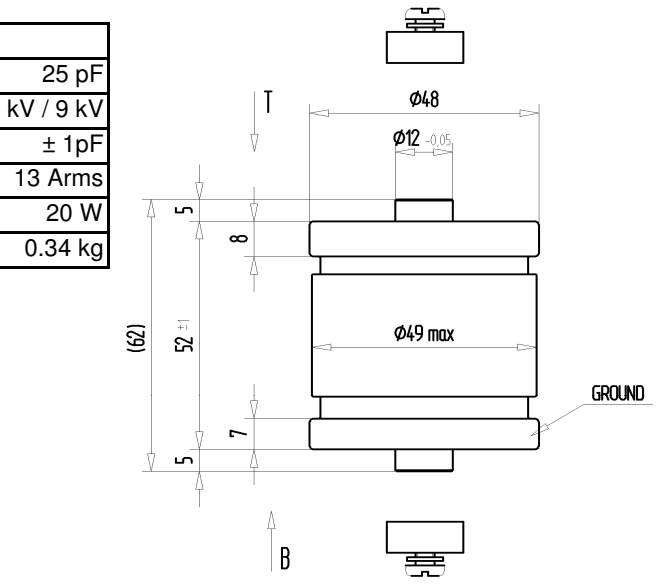
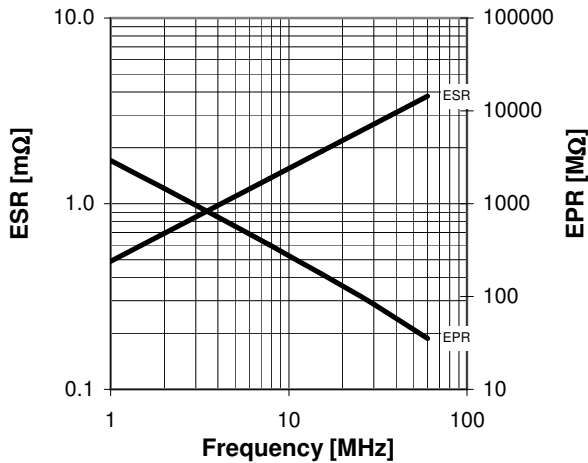
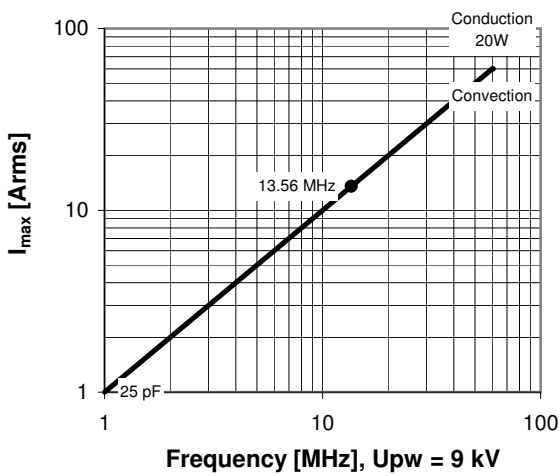


## CFMN-25CAC/15-AF-H

### Specifications

Capacity $C_{max}$ (nominal)	25 pF
Voltage (Peak Test $U_{pt}$ / Peak Working $U_{pw}$ )	15 kV / 9 kV
Capacity Tolerance	$\pm 1$ pF
Max. Current $I_{max}$ at 13.56 MHz with	13 Arms
Conduction Cooling	20 W
Net Weight	0.34 kg

$I_{max}$  at 25°C ambient and 125°C surface temp. for convection and conduction (20 W) cooling



<b>Type Ordering Information:</b>	<b>Upt</b>
CFMN-25CAC/15-AF-H	15 kV

<b>Special Features:</b>
Special C-Curve / Special Capacity Tolerance